



*Balcony sizes vary

1 bedroom - Unit type A

Area	Min	Max
Suite	54.90 Sq.m / 590.94 Sq.ft	55.15 Sq.m / 593.63 Sq.ft
Balcony	4.19 Sq.m / 45.10 Sq.ft	4.19 Sq.m / 45.10 Sq.ft
Total built-up	59.09 Sq.m / 636.04 Sq.ft	59.34 Sq.m / 638.73 Sq.ft

OLBIA

Disclaimer

1. All room dimensions are in metric and measured to structural elements and exclude wall finishes and construction tolerances. 2. All dimensions have been provided by our consultant architects. 3. All materials, dimensions, drawings features and amenities are approximate at the time of printing. 4. Actual area may vary from stated area. Drawings not to scale E&OE. The developer reserves the right to make revisions to the floor plans and any features, materials, dimensions, drawings and amenities mentioned in this brochure without notice.



1 bedroom - Unit type A1

Area	Min	Max
Suite	54.67 Sq.m / 588.46 Sq.ft	55.26 Sq.m / 594.81 Sq.ft
Balcony	4.19 Sq.m / 45.10 Sq.ft	4.19 Sq.m / 45.10 Sq.ft
Total built-up	58.86 Sq.m / 633.56 Sq.ft	59.45 Sq.m / 639.91 Sq.ft

Disclaimer

1. All room dimensions are in metric and measured to structural elements and exclude wall finishes and construction tolerances. 2. All dimensions have been provided by our consultant architects. 3. All materials, dimensions, drawings features and amenities are approximate at the time of printing. 4. Actual area may vary from stated area. Drawings not to scale E&OE. The developer reserves the right to make revisions to the floor plans and any features, materials, dimensions, drawings and amenities mentioned in this brochure without notice.



*Balcony sizes vary

1 bedroom - Unit type A2

Suite	54.84 Sq.m / 590.29 Sq.ft
Balcony	4.26 Sq.m / 45.85 Sq.ft
Total built-up	59.10 Sq.m / 636.15 Sq.ft

Disclaimer

1. All room dimensions are in metric and measured to structural elements and exclude wall finishes and construction tolerances. 2. All dimensions have been provided by our consultant architects. 3. All materials, dimensions, drawings features and amenities are approximate at the time of printing. 4. Actual area may vary from stated area. Drawings not to scale E&OE. The developer reserves the right to make revisions to the floor plans and any features, materials, dimensions, drawings and amenities mentioned in this brochure without notice.

OLBIA



*Balcony sizes vary

1 bedroom - Unit type A3

Area	Min	Max
Suite	54.67 Sq.m / 588.46 Sq.ft	55.09 Sq.m / 592.98 Sq.ft
Balcony	16.74 Sq.m / 180.19 Sq.ft	16.74 Sq.m / 180.19 Sq.ft
Total built-up	71.41 Sq.m / 768.65 Sq.ft	71.83 Sq.m / 773.17 Sq.ft

Disclaimer

1. All room dimensions are in metric and measured to structural elements and exclude wall finishes and construction tolerances. 2. All dimensions have been provided by our consultant architects. 3. All materials, dimensions, drawings features and amenities are approximate at the time of printing. 4. Actual area may vary from stated area. Drawings not to scale E&OE. The developer reserves the right to make revisions to the floor plans and any features, materials, dimensions, drawings and amenities mentioned in this brochure without notice.

OLBIA



*Balcony sizes vary

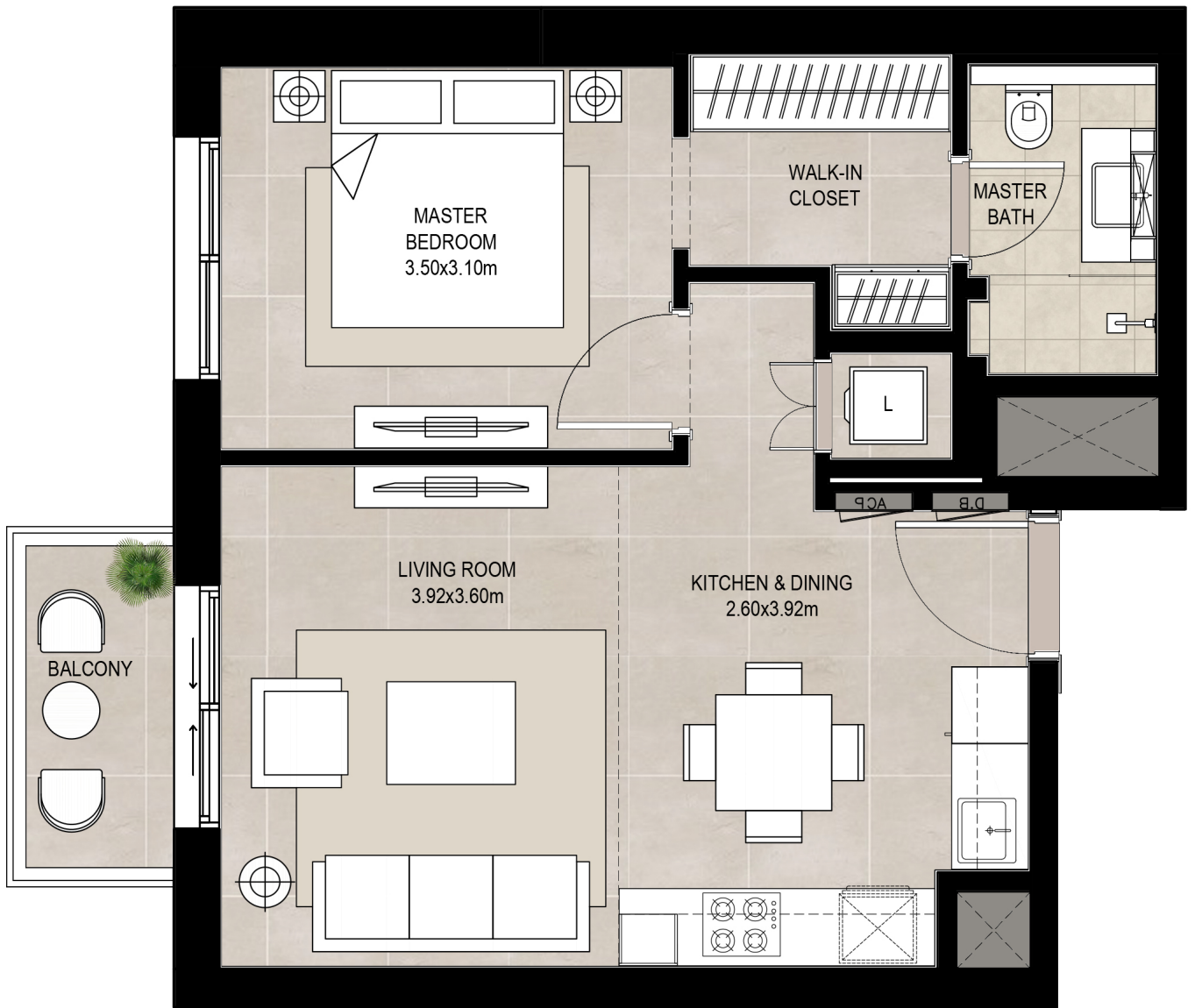
1 bedroom - Unit type A4

Area	Min	Max
Suite	54.82 Sq.m / 590.08 Sq.ft	54.90 Sq.m / 590.94 Sq.ft
Balcony	4.19 Sq.m / 45.10 Sq.ft	17.08 Sq.m / 183.85 Sq.ft
Total built-up	59.09 Sq.m / 636.04 Sq.ft	71.90 Sq.m / 773.93 Sq.ft

Disclaimer

1. All room dimensions are in metric and measured to structural elements and exclude wall finishes and construction tolerances. 2. All dimensions have been provided by our consultant architects. 3. All materials, dimensions, drawings features and amenities are approximate at the time of printing. 4. Actual area may vary from stated area. Drawings not to scale E&OE. The developer reserves the right to make revisions to the floor plans and any features, materials, dimensions, drawings and amenities mentioned in this brochure without notice.

OLBIA



*Balcony sizes vary

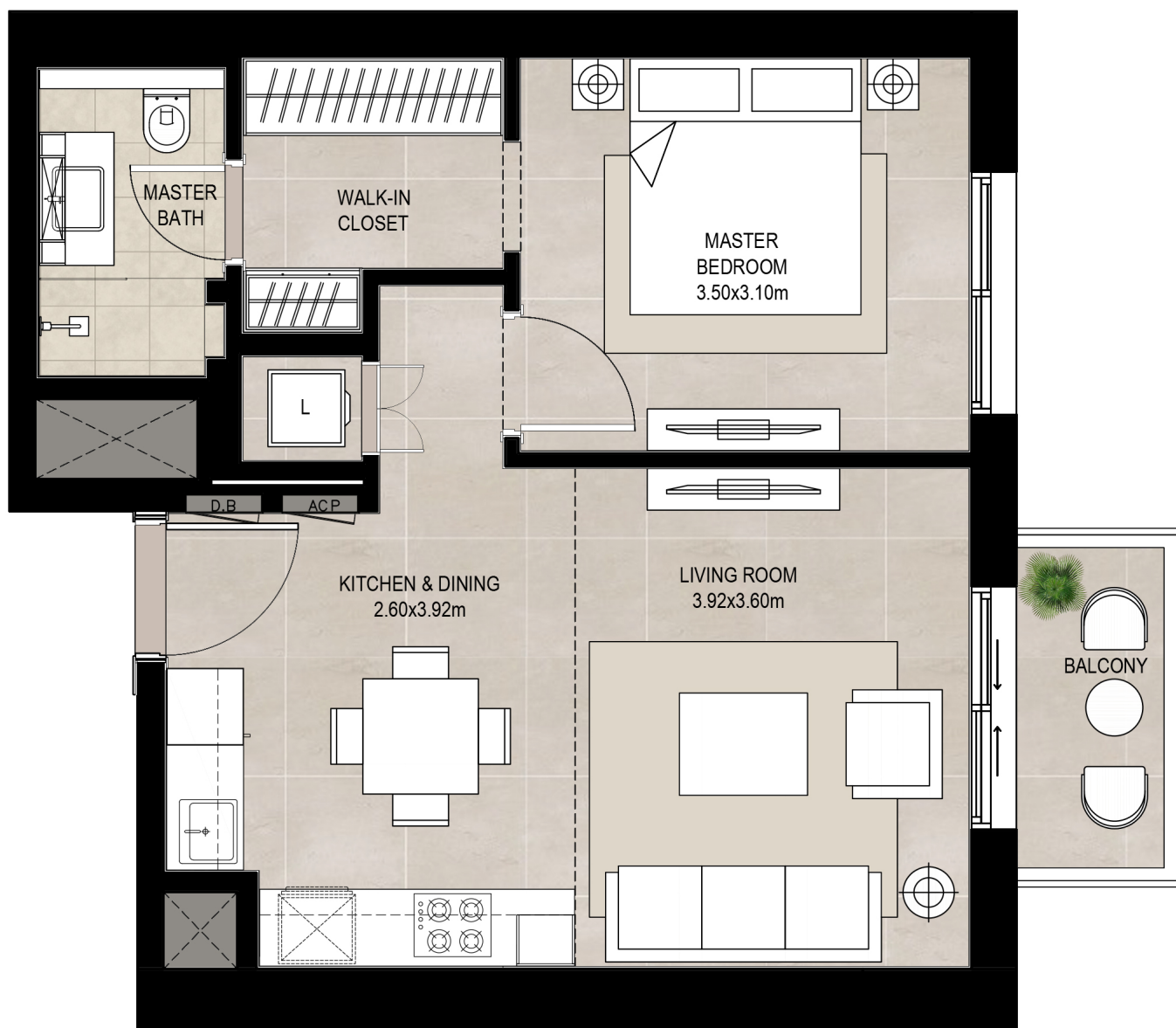
1 bedroom - Unit type B

Area	Min	Max
Suite	50.35 Sq.m / 541.96 Sq.ft	50.36 Sq.m / 542.07 Sq.ft
Balcony	4.19 Sq.m / 45.10 Sq.ft	4.19 Sq.m / 45.10 Sq.ft
Total built-up	54.54 Sq.m / 587.06 Sq.ft	54.55 Sq.m / 587.17 Sq.ft

Disclaimer

1. All room dimensions are in metric and measured to structural elements and exclude wall finishes and construction tolerances. 2. All dimensions have been provided by our consultant architects. 3. All materials, dimensions, drawings features and amenities are approximate at the time of printing. 4. Actual area may vary from stated area. Drawings not to scale E&OE. The developer reserves the right to make revisions to the floor plans and any features, materials, dimensions, drawings and amenities mentioned in this brochure without notice.

OLBIA



*Balcony sizes vary

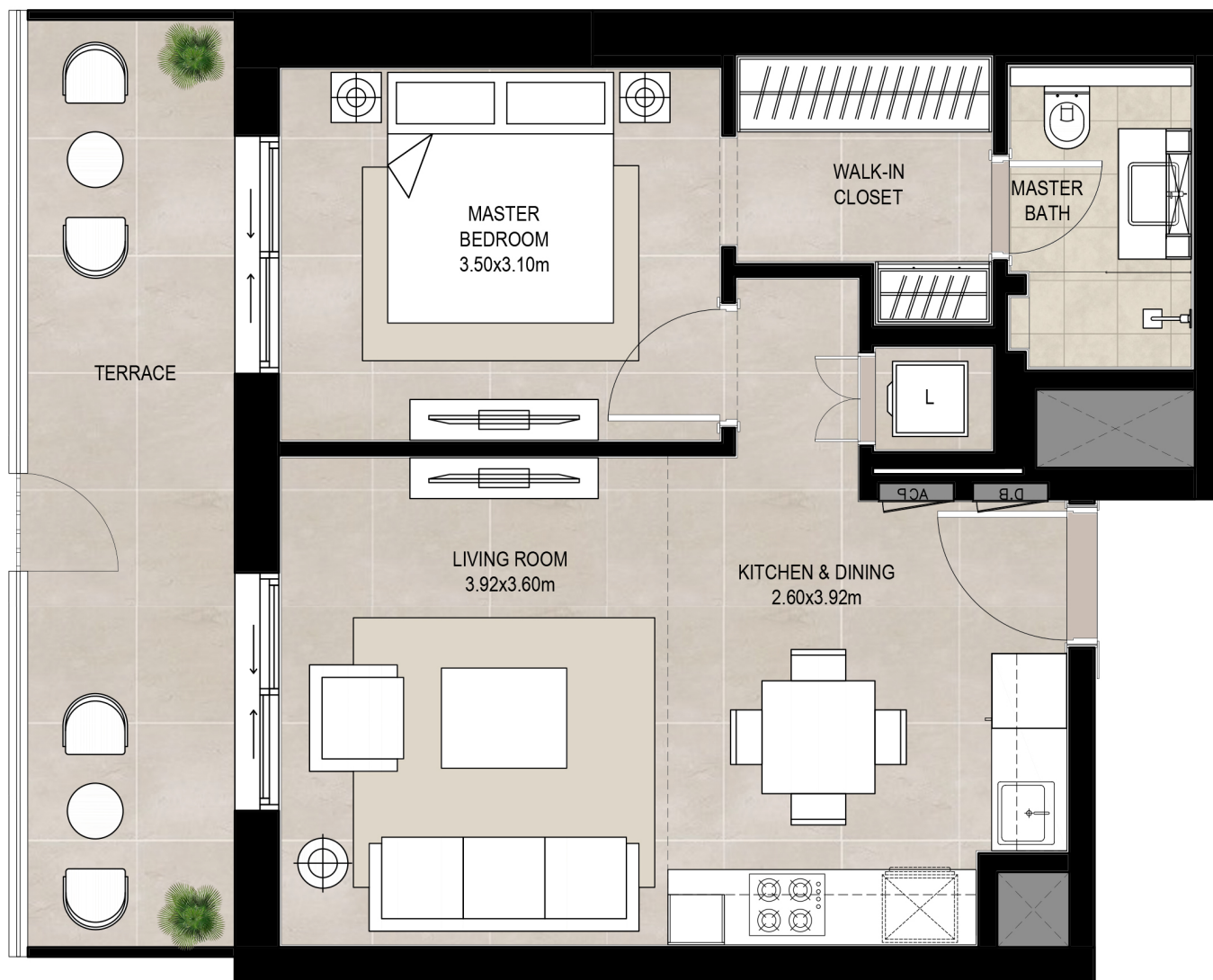
1 bedroom - Unit type B (M)

Suite	50.63 Sq.m / 544.98 Sq.ft
Balcony	4.19 Sq.m / 45.10 Sq.ft
Total built-up	54.82 Sq.m / 590.08 Sq.ft

Disclaimer

1. All room dimensions are in metric and measured to structural elements and exclude wall finishes and construction tolerances. 2. All dimensions have been provided by our consultant architects. 3. All materials, dimensions, drawings features and amenities are approximate at the time of printing. 4. Actual area may vary from stated area. Drawings not to scale E&OE. The developer reserves the right to make revisions to the floor plans and any features, materials, dimensions, drawings and amenities mentioned in this brochure without notice.

OLBIA



*Balcony sizes vary

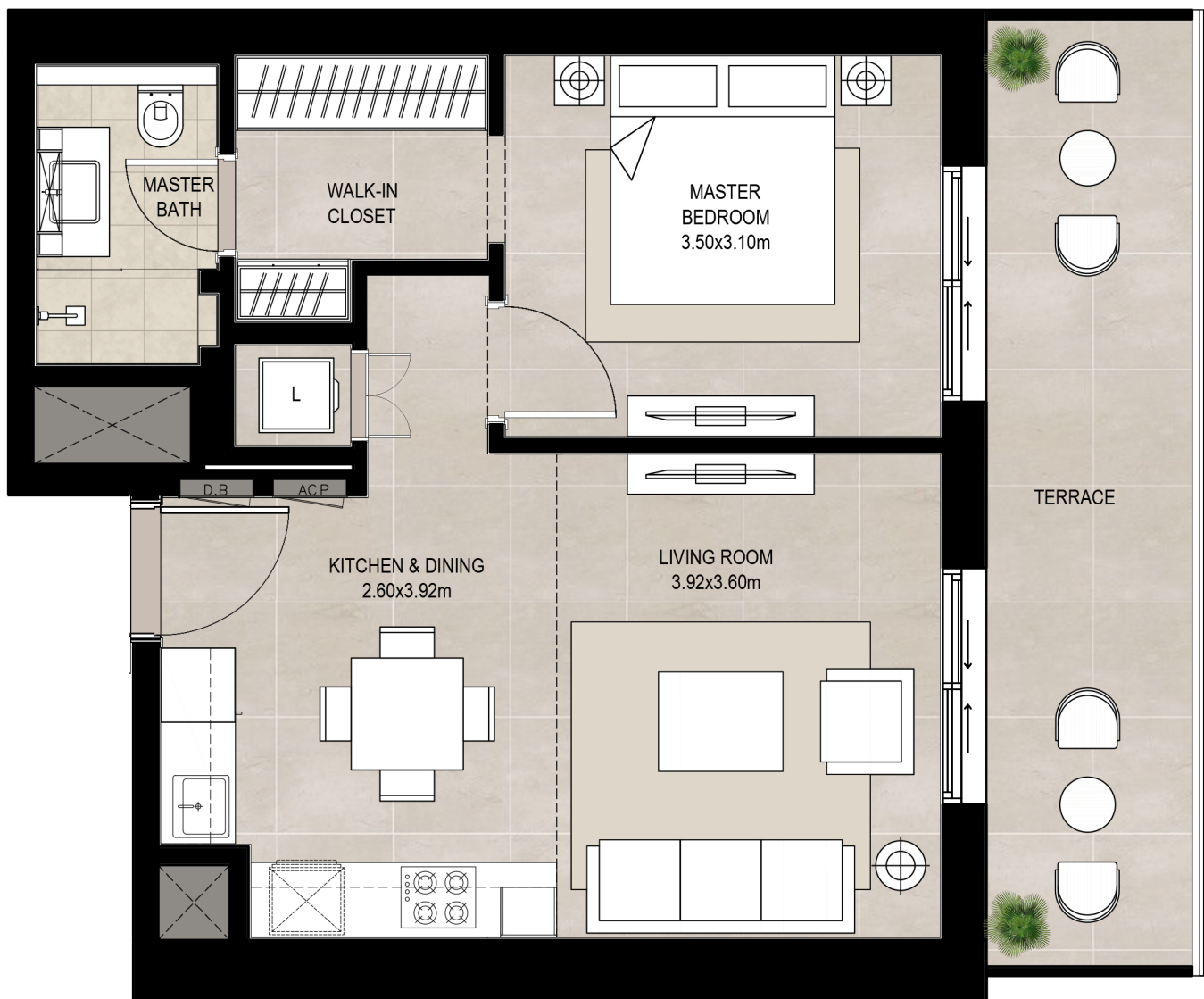
1 bedroom - Unit type B1

Suite	50.36 Sq.m / 542.07 Sq.ft
Balcony	15.72 Sq.m / 169.21 Sq.ft
Total built-up	66.08 Sq.m / 711.28 Sq.ft

Disclaimer

1. All room dimensions are in metric and measured to structural elements and exclude wall finishes and construction tolerances. 2. All dimensions have been provided by our consultant architects. 3. All materials, dimensions, drawings features and amenities are approximate at the time of printing. 4. Actual area may vary from stated area. Drawings not to scale E&OE. The developer reserves the right to make revisions to the floor plans and any features, materials, dimensions, drawings and amenities mentioned in this brochure without notice.

OLBIA



*Balcony sizes vary

1 bedroom - Unit type B1 (M)

Suite	50.63 Sq.m / 544.98 Sq.ft
Balcony	15.02 Sq.m / 161.67 Sq.ft
Total built-up	65.65 Sq.m / 706.65 Sq.ft

Disclaimer

1. All room dimensions are in metric and measured to structural elements and exclude wall finishes and construction tolerances. 2. All dimensions have been provided by our consultant architects. 3. All materials, dimensions, drawings features and amenities are approximate at the time of printing. 4. Actual area may vary from stated area. Drawings not to scale E&OE. The developer reserves the right to make revisions to the floor plans and any features, materials, dimensions, drawings and amenities mentioned in this brochure without notice.

OLBIA



*Balcony sizes vary

2 bedroom - Unit type A

Suite	81.10 Sq.m / 872.95 Sq.ft
Balcony	6.80 Sq.m / 73.19 Sq.ft
Total built-up	87.90 Sq.m / 946.15 Sq.ft

OLBIA

Disclaimer

1. All room dimensions are in metric and measured to structural elements and exclude wall finishes and construction tolerances. 2. All dimensions have been provided by our consultant architects. 3. All materials, dimensions, drawings features and amenities are approximate at the time of printing. 4. Actual area may vary from stated area. Drawings not to scale E&OE. The developer reserves the right to make revisions to the floor plans and any features, materials, dimensions, drawings and amenities mentioned in this brochure without notice.



*Balcony sizes vary

2 bedroom - Unit type A (M)

Area	Min	Max
Suite	80.54 Sq.m / 866.93 Sq.ft	80.87 Sq.m / 870.48 Sq.ft
Balcony	6.80 Sq.m / 73.19 Sq.ft	8.23 Sq.m / 88.59 Sq.ft
Total built-up	87.34 Sq.m / 940.12 Sq.ft	89.10 Sq.m / 959.06 Sq.ft

Disclaimer

1. All room dimensions are in metric and measured to structural elements and exclude wall finishes and construction tolerances. 2. All dimensions have been provided by our consultant architects. 3. All materials, dimensions, drawings features and amenities are approximate at the time of printing. 4. Actual area may vary from stated area. Drawings not to scale E&OE. The developer reserves the right to make revisions to the floor plans and any features, materials, dimensions, drawings and amenities mentioned in this brochure without notice.

OLBIA



2 bedroom - Unit type A1

Area	Min	Max
Suite	80.54 Sq.m / 866.93 Sq.ft	80.87 Sq.m / 870.48 Sq.ft
Balcony	6.80 Sq.m / 73.19 Sq.ft	8.23 Sq.m / 88.59 Sq.ft 9.24
Total built-up	87.34 Sq.m / 940.12 Sq.ft	89.10 Sq.m / 959.06 Sq.ft

Disclaimer

1. All room dimensions are in metric and measured to structural elements and exclude wall finishes and construction tolerances. 2. All dimensions have been provided by our consultant architects. 3. All materials, dimensions, drawings features and amenities are approximate at the time of printing. 4. Actual area may vary from stated area. Drawings not to scale E&OE. The developer reserves the right to make revisions to the floor plans and any features, materials, dimensions, drawings and amenities mentioned in this brochure without notice.



*Balcony sizes vary

2 bedroom - Unit type A1 (M)

Area	Min	Max
Suite	80.94 Sq.m / 871.23 Sq.ft	81.19 Sq.m / 873.92 Sq.ft
Balcony	7.59 Sq.m / 81.70 Sq.ft	7.59 Sq.m / 81.70 Sq.ft
Total built-up	88.53 Sq.m / 952.93 Sq.ft	88.78 Sq.m / 955.62 Sq.ft

Disclaimer

1. All room dimensions are in metric and measured to structural elements and exclude wall finishes and construction tolerances. 2. All dimensions have been provided by our consultant architects. 3. All materials, dimensions, drawings features and amenities are approximate at the time of printing. 4. Actual area may vary from stated area. Drawings not to scale E&OE. The developer reserves the right to make revisions to the floor plans and any features, materials, dimensions, drawings and amenities mentioned in this brochure without notice.



*Balcony sizes vary

2 bedroom - Unit type A2

Suite	80.74 Sq.m / 869.08 Sq.ft
Balcony	27.27 Sq.m / 293.53 Sq.ft
Total built-up	108.01 Sq.m / 1162.61 Sq.ft

Disclaimer

1. All room dimensions are in metric and measured to structural elements and exclude wall finishes and construction tolerances. 2. All dimensions have been provided by our consultant architects. 3. All materials, dimensions, drawings features and amenities are approximate at the time of printing. 4. Actual area may vary from stated area. Drawings not to scale E&OE. The developer reserves the right to make revisions to the floor plans and any features, materials, dimensions, drawings and amenities mentioned in this brochure without notice.

OLBIA



*Balcony sizes vary

2 bedroom - Unit type A3

Suite	80.87 Sq.m / 870.48 Sq.ft
Balcony	26.88 Sq.m / 289.33 Sq.ft
Total built-up	107.75 Sq.m / 1159.81 Sq.ft

Disclaimer

1. All room dimensions are in metric and measured to structural elements and exclude wall finishes and construction tolerances. 2. All dimensions have been provided by our consultant architects. 3. All materials, dimensions, drawings features and amenities are approximate at the time of printing. 4. Actual area may vary from stated area. Drawings not to scale E&OE. The developer reserves the right to make revisions to the floor plans and any features, materials, dimensions, drawings and amenities mentioned in this brochure without notice.

OLBIA



*Balcony sizes vary

2 bedroom - Unit type A4

Suite	80.94 Sq.m / 871.23 Sq.ft
Balcony	26.84 Sq.m / 288.90 Sq.ft
Total built-up	107.78 Sq.m / 1160.13 Sq.ft

Disclaimer

1. All room dimensions are in metric and measured to structural elements and exclude wall finishes and construction tolerances. 2. All dimensions have been provided by our consultant architects. 3. All materials, dimensions, drawings features and amenities are approximate at the time of printing. 4. Actual area may vary from stated area. Drawings not to scale E&OE. The developer reserves the right to make revisions to the floor plans and any features, materials, dimensions, drawings and amenities mentioned in this brochure without notice.

OLBIA



*Balcony sizes vary

2 bedroom - Unit type B

Suite	73.95 Sq.m / 795.99 Sq.ft
Balcony	11.14 Sq.m / 119.91 Sq.ft
Total built-up	85.09 Sq.m / 915.90 Sq.ft

OLBIA

Disclaimer

1. All room dimensions are in metric and measured to structural elements and exclude wall finishes and construction tolerances. 2. All dimensions have been provided by our consultant architects. 3. All materials, dimensions, drawings features and amenities are approximate at the time of printing. 4. Actual area may vary from stated area. Drawings not to scale E&OE. The developer reserves the right to make revisions to the floor plans and any features, materials, dimensions, drawings and amenities mentioned in this brochure without notice.



*Balcony sizes vary

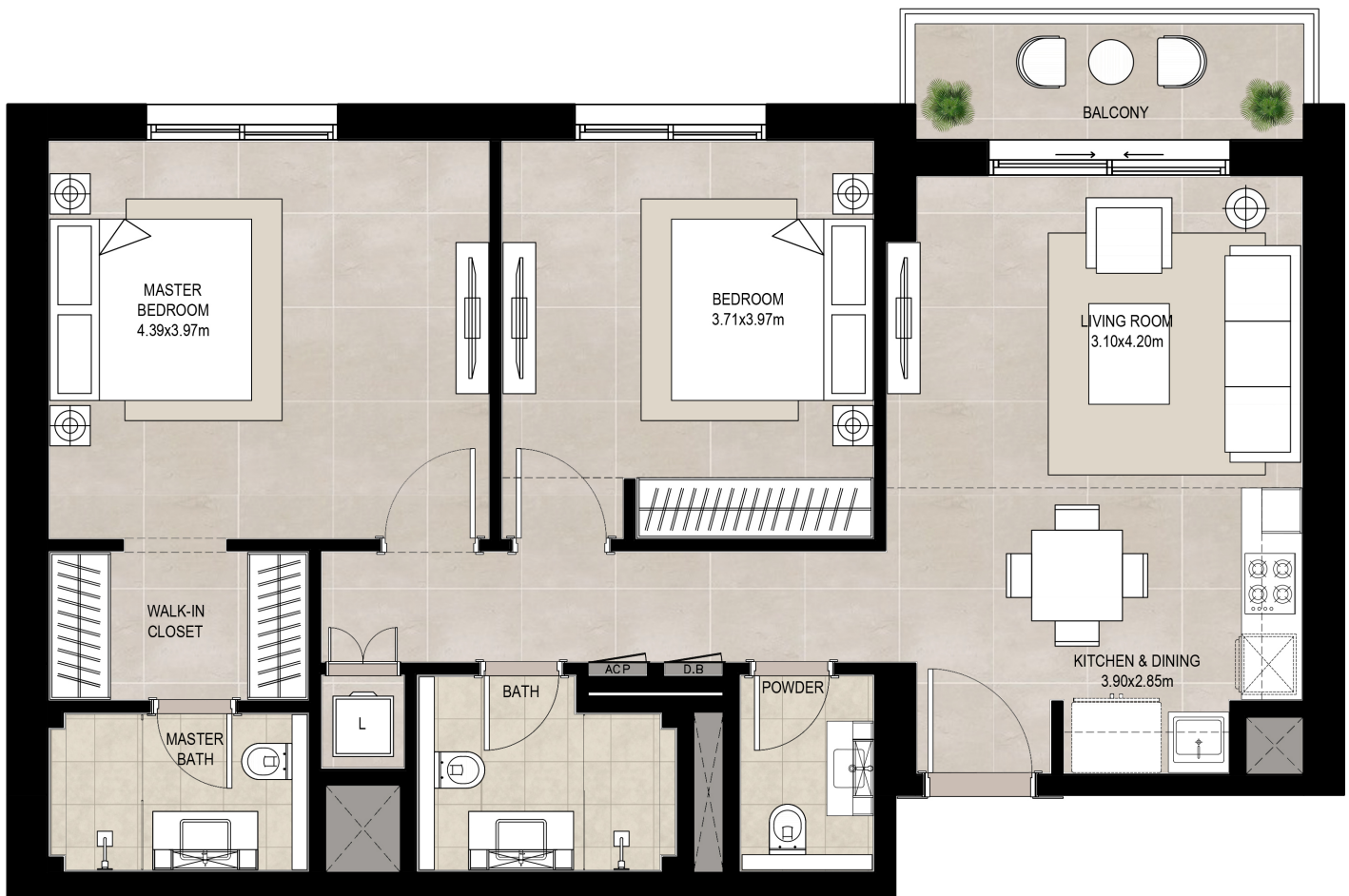
2 bedroom - Unit type B1

Suite	73.97 Sq.m / 796.21 Sq.ft
Balcony	31.46 Sq.m / 338.63 Sq.ft
Total built-up	105.43 Sq.m / 1134.84 Sq.ft

Disclaimer

1. All room dimensions are in metric and measured to structural elements and exclude wall finishes and construction tolerances. 2. All dimensions have been provided by our consultant architects. 3. All materials, dimensions, drawings features and amenities are approximate at the time of printing. 4. Actual area may vary from stated area. Drawings not to scale E&OE. The developer reserves the right to make revisions to the floor plans and any features, materials, dimensions, drawings and amenities mentioned in this brochure without notice.

OLBIA



*Balcony sizes vary

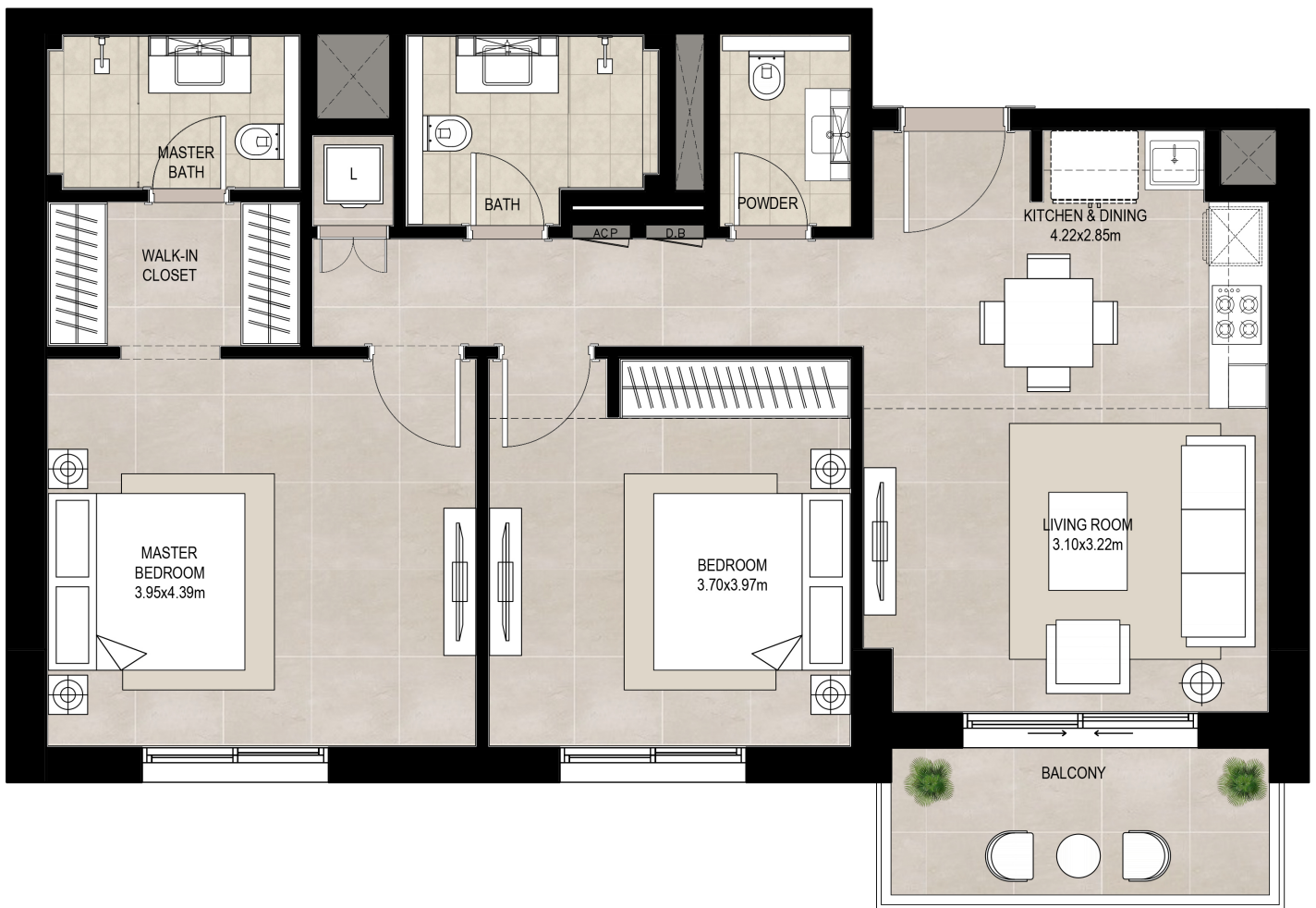
2 bedroom - Unit type C

Suite	88.74 Sq.m / 955.19 Sq.ft
Balcony	6.14 Sq.m / 66.09 Sq.ft
Total built-up	94.88 Sq.m / 1021.28 Sq.ft

OLBIA

Disclaimer

1. All room dimensions are in metric and measured to structural elements and exclude wall finishes and construction tolerances. 2. All dimensions have been provided by our consultant architects. 3. All materials, dimensions, drawings features and amenities are approximate at the time of printing. 4. Actual area may vary from stated area. Drawings not to scale E&OE. The developer reserves the right to make revisions to the floor plans and any features, materials, dimensions, drawings and amenities mentioned in this brochure without notice.



*Balcony sizes vary

2 bedroom - Unit type C1

Suite	88.80 Sq.m / 955.84 Sq.ft
Balcony	7.54 Sq.m / 81.16 Sq.ft
Total built-up	96.34 Sq.m / 1037.00 Sq.ft

Disclaimer

1. All room dimensions are in metric and measured to structural elements and exclude wall finishes and construction tolerances. 2. All dimensions have been provided by our consultant architects. 3. All materials, dimensions, drawings features and amenities are approximate at the time of printing. 4. Actual area may vary from stated area. Drawings not to scale E&OE. The developer reserves the right to make revisions to the floor plans and any features, materials, dimensions, drawings and amenities mentioned in this brochure without notice.

OLBIA



*Balcony sizes vary

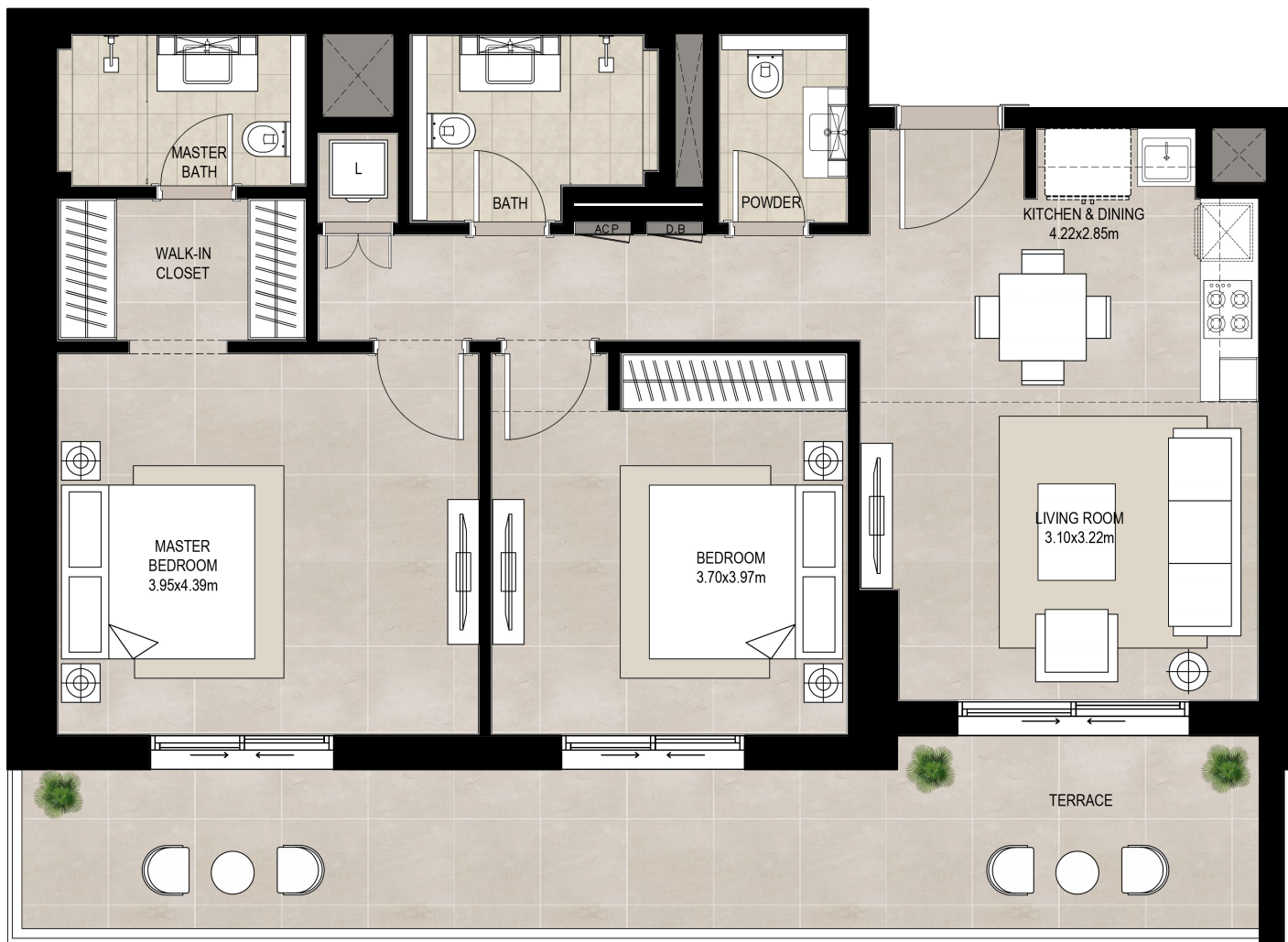
2 bedroom - Unit type C2

Suite	88.72 Sq.m / 954.97 Sq.ft
Balcony	6.16 Sq.m / 66.31 Sq.ft
Total built-up	94.88 Sq.m / 1021.28 Sq.ft

OLBIA

Disclaimer

1. All room dimensions are in metric and measured to structural elements and exclude wall finishes and construction tolerances. 2. All dimensions have been provided by our consultant architects. 3. All materials, dimensions, drawings features and amenities are approximate at the time of printing. 4. Actual area may vary from stated area. Drawings not to scale E&OE. The developer reserves the right to make revisions to the floor plans and any features, materials, dimensions, drawings and amenities mentioned in this brochure without notice.



*Balcony sizes vary

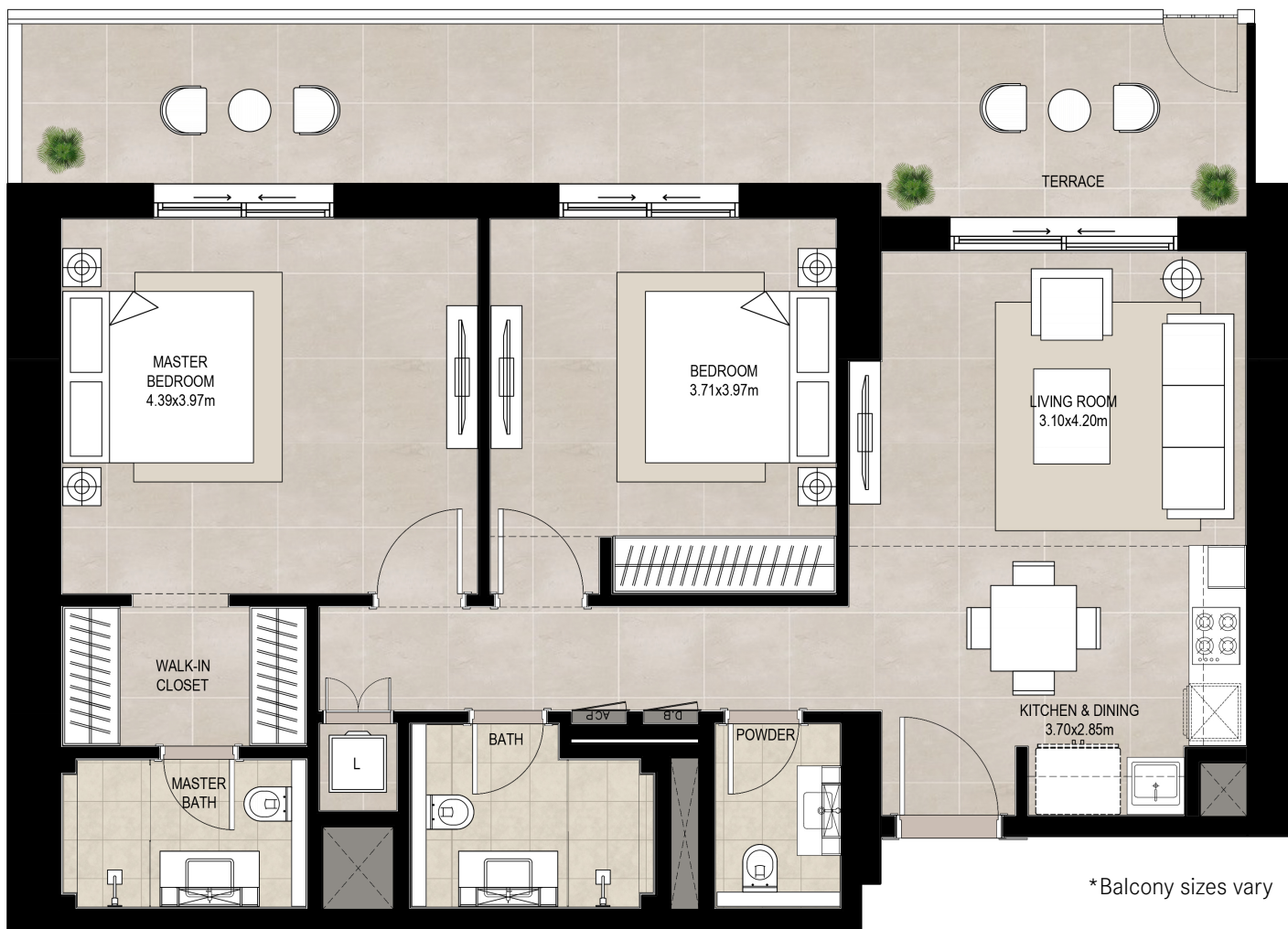
2 bedroom - Unit type C3

Suite	88.59 Sq.m / 953.57 Sq.ft
Balcony	27.76 Sq.m / 298.81 Sq.ft
Total built-up	116.35 Sq.m / 1252.38 Sq.ft

Disclaimer

1. All room dimensions are in metric and measured to structural elements and exclude wall finishes and construction tolerances. 2. All dimensions have been provided by our consultant architects. 3. All materials, dimensions, drawings features and amenities are approximate at the time of printing. 4. Actual area may vary from stated area. Drawings not to scale E&OE. The developer reserves the right to make revisions to the floor plans and any features, materials, dimensions, drawings and amenities mentioned in this brochure without notice.

OLBIA



2 bedroom - Unit type C4

Suite	88.79 Sq.m / 955.73 Sq.ft
Balcony	26.80 Sq.m / 288.47 Sq.ft
Total built-up	115.59 Sq.m / 1244.20 Sq.ft

Disclaimer

1. All room dimensions are in metric and measured to structural elements and exclude wall finishes and construction tolerances. 2. All dimensions have been provided by our consultant architects. 3. All materials, dimensions, drawings features and amenities are approximate at the time of printing. 4. Actual area may vary from stated area. Drawings not to scale E&OE. The developer reserves the right to make revisions to the floor plans and any features, materials, dimensions, drawings and amenities mentioned in this brochure without notice.

OLBIA



*Balcony sizes vary

3 bedroom - Unit type A

Suite	119.73 Sq.m / 1288.76 Sq.ft
Balcony	10.41 Sq.m / 112.05 Sq.ft
Total built-up	130.14 Sq.m / 1400.82 Sq.ft

Disclaimer

1. All room dimensions are in metric and measured to structural elements and exclude wall finishes and construction tolerances. 2. All dimensions have been provided by our consultant architects. 3. All materials, dimensions, drawings features and amenities are approximate at the time of printing. 4. Actual area may vary from stated area. Drawings not to scale E&OE. The developer reserves the right to make revisions to the floor plans and any features, materials, dimensions, drawings and amenities mentioned in this brochure without notice.

OLBIA



*Balcony sizes vary

3 bedroom - Unit type A1

Suite	119.75 Sq.m / 1288.98 Sq.ft
Balcony	38.57 Sq.m / 415.16 Sq.ft
Total built-up	158.32 Sq.m / 1704.14 Sq.ft

Disclaimer

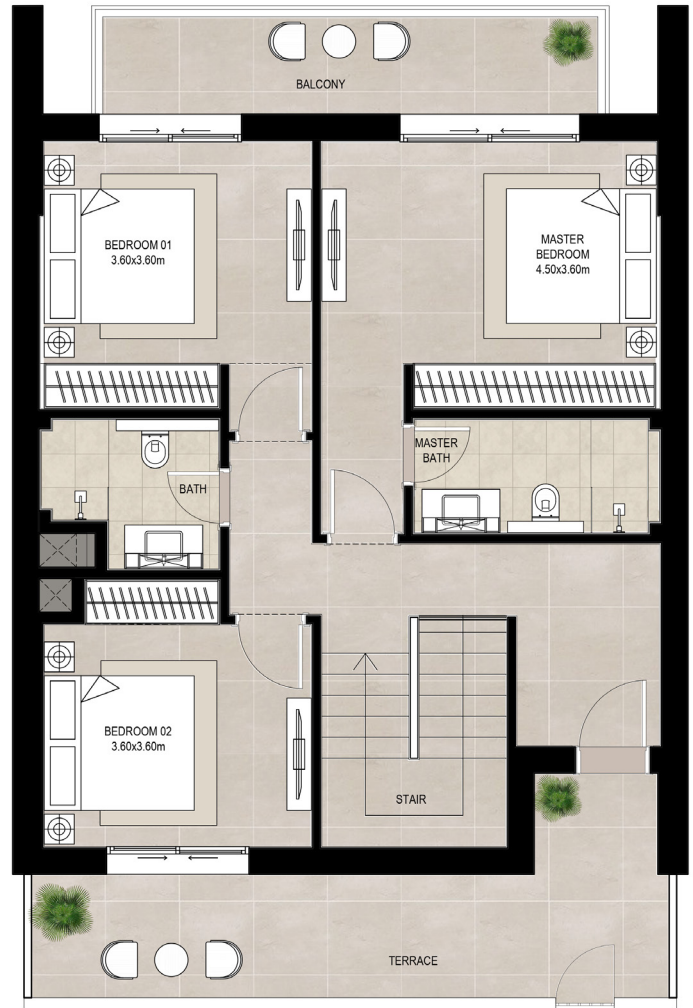
1. All room dimensions are in metric and measured to structural elements and exclude wall finishes and construction tolerances. 2. All dimensions have been provided by our consultant architects. 3. All materials, dimensions, drawings features and amenities are approximate at the time of printing. 4. Actual area may vary from stated area. Drawings not to scale E&OE. The developer reserves the right to make revisions to the floor plans and any features, materials, dimensions, drawings and amenities mentioned in this brochure without notice.

OLBIA

GROUND FLOOR



FIRST FLOOR



*Balcony sizes vary

3 bedroom duplex - Unit type A

Area	Min	Max
Suite	163.43 Sq.m / 1759.15 Sq.ft	163.48 Sq.m / 1759.68 Sq.ft
Balcony	38.57 Sq.m / 415.16 Sq.ft	38.66 Sq.m / 416.13 Sq.ft
Total built-up	202.05 Sq.m / 2174.85 Sq.ft	202.09 Sq.m / 2175.28 Sq.ft

OLBIA

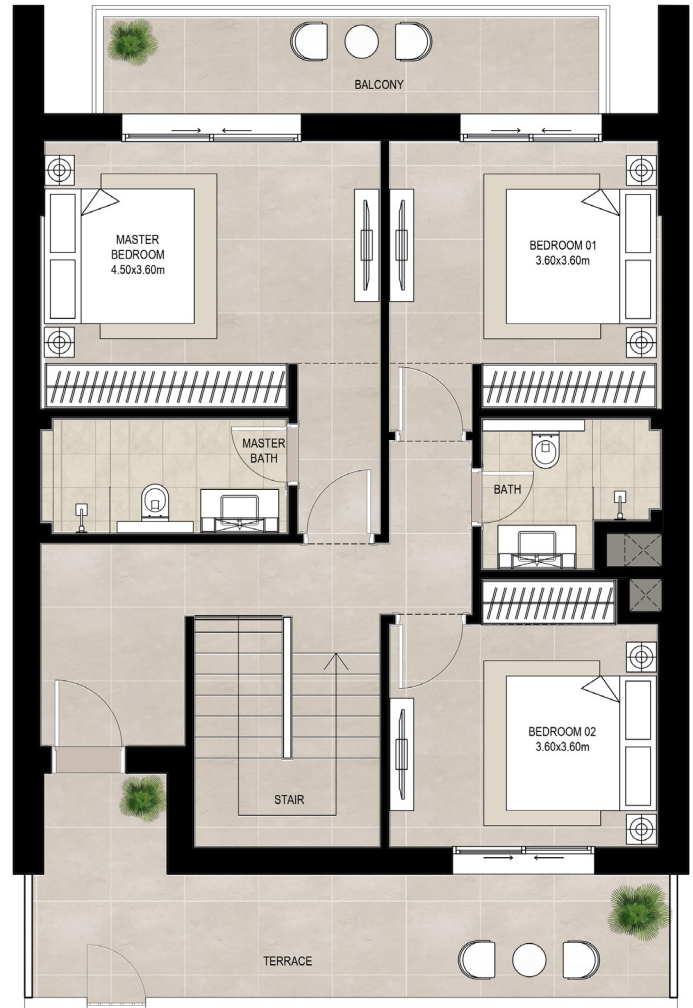
Disclaimer

1. All room dimensions are in metric and measured to structural elements and exclude wall finishes and construction tolerances. 2. All dimensions have been provided by our consultant architects. 3. All materials, dimensions, drawings features and amenities are approximate at the time of printing. 4. Actual area may vary from stated area. Drawings not to scale E&OE. The developer reserves the right to make revisions to the floor plans and any features, materials, dimensions, drawings and amenities mentioned in this brochure without notice.

GROUND FLOOR



FIRST FLOOR



*Balcony sizes vary

3 bedroom duplex - Unit type A (M)

Suite	163.46 Sq.m / 1759.47 Sq.ft
Balcony	38.64 Sq.m / 415.92 Sq.ft
Total built-up	202.10 Sq.m / 2175.39 Sq.ft

OLBIA

Disclaimer

1. All room dimensions are in metric and measured to structural elements and exclude wall finishes and construction tolerances. 2. All dimensions have been provided by our consultant architects. 3. All materials, dimensions, drawings features and amenities are approximate at the time of printing. 4. Actual area may vary from stated area. Drawings not to scale E&OE. The developer reserves the right to make revisions to the floor plans and any features, materials, dimensions, drawings and amenities mentioned in this brochure without notice.