

*Ivy Gardens* 2  
BY SAMANA DEVELOPERS

A SYMPHONY OF LUXURY

**SAMANA**  
DEVELOPERS





# URBAN HAVEN

Welcome home to Ivy Gardens 2 by SAMANA Developers – a luxurious haven. Walk into the world of opulence, reflected perfectly in every detail of this exquisite project. This is where you experience the perfect amalgamation of modern comfort and natural serenity. Discover your new sanctuary in the heart of Dubai.



# ELEGANCE REDEFINED

Behold, the epitome of modern living - Ivy Gardens 2 by SAMANA Developers. A masterpiece of architecture, this stunning project redefines luxury living in the heart of Dubai. Reflecting craftsmanship, each space here is created to be as functional as it is beautiful. Come discover the magic unfold!

SAMANA



A woman with blonde hair is seen from the back, wearing a strapless, floor-length green gown with a beaded bodice. The dress is billowing in the wind, creating large, graceful folds. She is standing in a field of tall, golden-brown grass. The background is a soft-focus landscape under a warm, golden light, suggesting a sunset or sunrise. The overall mood is serene and elegant.

# VISION MEETS REALITY

Like a symphony, this architectural marvel orchestrates a harmonious blend of nature and luxury, offering you a serene retreat from the bustling city life. Experience the allure of sumptuousness and discover a new way of living, where comfort and style intertwine to create an exceptional living experience.













# A TAPESTRY OF OPULENCE

Emerge into a realm of exquisite grandeur at Ivy Gardens 2 by SAMANA Developers, where every facet of existence is concealed in lavish sophistication. This architectural marvel is a paean to luxury, meticulously crafted to cater to the most discerning tastes.







# EASY ACCESS, GREAT CONVENIENCE

Situated at DLRC, IVY Gardens 2 by SAMANA Developers offers the perfect location and has everything needed for everyday life nearby, along with easy access to major locations. It is strategically located between the Emirates and Al Ain highways.

## 10 – 15 min

Global Village  
Dubai Outlet Mall  
MG World  
Fairgreen International School

## 15 – 20 min

Mirdif City Centre  
Dubai Airport  
Dubai Mall  
Miracle Garden

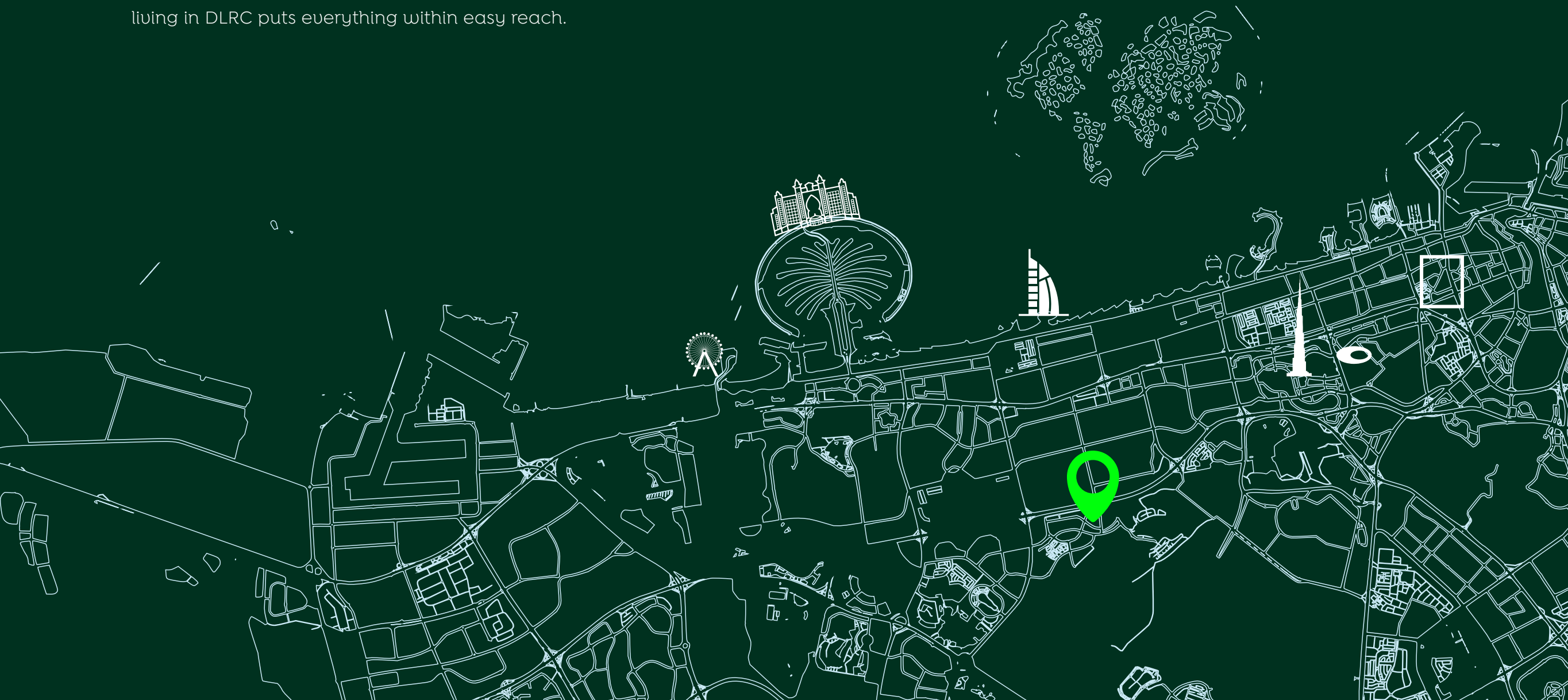
## 15 – 20 min

Dubai Downtown  
Burj Al Khalifa



# SEAMLESS ACCESSIBILITY

With easy access to major highways and public transportation, DLRC offers residents seamless connectivity to the rest of the city. Whether you're commuting to work or exploring the city's many attractions, living in DLRC puts everything within easy reach.







SAMANA





# REFLECTING OPULENCE

A symphony of contemporary design and timeless elegance, standing as a beacon of prestige in the bustling heart of Dubai. Each detail, a stroke of genius, weaving together to create a masterpiece simply awe-inspiring. It's time to luxuriate in the splendour!







# LIVE THE SERENE MOMENTS

Immerse yourself in a world of romance and equanimity at Ivy Gardens 2 by SAMANA Developers. Here, amidst stunning views and gentle breezes, you'll find the perfect setting for moments of togetherness and intimacy. Our balconies are more than just outdoor spaces; they're extensions of your living space, offering you a private retreat where you can relax, unwind, and reconnect with your loved one.











**VIBE**  
DRUM & BASS  
DJ MARKY - ELEITO MELHOR DJ INTERNACIONAL 2023 XTREAMS AWARDS  
1Xtra a



# DIVE INTO INDULGENCE

Indulge in the ultimate relaxation experience at Ivy Gardens 2 by SAMANA Developers, where luxury meets tranquillity. Whether you're lounging by the poolside, sipping on a refreshing drink, or taking a leisurely swim, every moment here is a testament to the art of living well. Come explore a lifestyle that is as indulgent as it is rejuvenating.



SAMANA





# BLENDING TECHNOLOGY WITH LUXURY

Live a life that is as smart as it is sophisticated with our smart homes. Experience the convenience of controlling your home with just a touch or a voice command. From adjusting the lighting to setting the perfect temperature, our smart homes put you in control, allowing you to create the perfect ambience for every moment.













# COMFORT OASIS

Experience the joy of family-centric living at Ivy Gardens 2 by SAMANA Developers, where every moment is an opportunity to create cherished memories. Here, you'll find a home that is not just luxurious but also warm, welcoming, and filled with love. Our spacious and elegantly designed living rooms are crafted with your family's comfort and happiness in mind.















# LIVE THE SERENE MOMENTS

Immerse yourself in a world of romance and equality at Ivy Gardens 2 by SAMANA Developers. Here, amidst stunning views and gentle breezes, you'll find the perfect setting for moments of togetherness and intimacy. Our balconies are more than just outdoor spaces; they're extensions of your living space, offering you a private retreat where you can relax, unwind, and reconnect with your loved one.



# BOWLING

Game	1	2	3	4	5	6	7	8	9	10	Total
Player 1	10	10	10	10	10	10	10	10	10	10	110
Player 2	5	7	9	8	6	4	3	2	1	0	45
Player 3	8	9	7	6	5	4	3	2	1	0	46
Player 4	6	8	7	6	5	4	3	2	1	0	42
Player 5	4	5	6	5	4	3	2	1	0	0	25
Team 1	30	30	30	30	30	30	30	30	30	30	315
Team 2	15	20	25	20	15	10	5	0	0	0	105

Game	1	2	3	4	5	6	7	8	9	10	Total
Player 1	10	10	10	10	10	10	10	10	10	10	110
Player 2	5	7	9	8	6	4	3	2	1	0	45
Player 3	8	9	7	6	5	4	3	2	1	0	46
Player 4	6	8	7	6	5	4	3	2	1	0	42
Player 5	4	5	6	5	4	3	2	1	0	0	25
Team 1	30	30	30	30	30	30	30	30	30	30	315
Team 2	15	20	25	20	15	10	5	0	0	0	105

Game	1	2	3	4	5	6	7	8	9	10	Total
Player 1	10	10	10	10	10	10	10	10	10	10	110
Player 2	5	7	9	8	6	4	3	2	1	0	45
Player 3	8	9	7	6	5	4	3	2	1	0	46
Player 4	6	8	7	6	5	4	3	2	1	0	42
Player 5	4	5	6	5	4	3	2	1	0	0	25
Team 1	30	30	30	30	30	30	30	30	30	30	315
Team 2	15	20	25	20	15	10	5	0	0	0	105







BALL SPEED: 93 mph

CARRY: 85 yds





A couple is jogging away from the camera on a paved path. The man is on the left, wearing a light blue t-shirt and dark shorts. The woman is on the right, wearing a light blue long-sleeved shirt and dark leggings. They are surrounded by lush greenery, including palm trees and flowering plants. The scene is bathed in the warm, golden light of a setting or rising sun, creating long shadows on the path. The background shows a blurred view of a residential area with buildings and more trees.

# REVEL IN THE JOYS OF LIFE

Your journey to wellness and indulgence commences at Ivy Gardens 2 by SAMANA Developers. Every moment is an ode to the art of living. Dive into a lifestyle that transcends the ordinary, offering you a sanctuary of serenity amidst the bustling city life. Savour the beauty of each day!













# A SEAMLESS EXPERIENCE

Experience the epitome of convenience with our valet parking service at Ivy Gardens 2 by SAMANA Developers. Our valet parking service is more than just a convenience; it's a luxury experience that adds an extra touch of elegance to your lifestyle. Whether you're arriving home after a long day or heading out for a night on the town, our valet service makes parking effortless and stress-free.

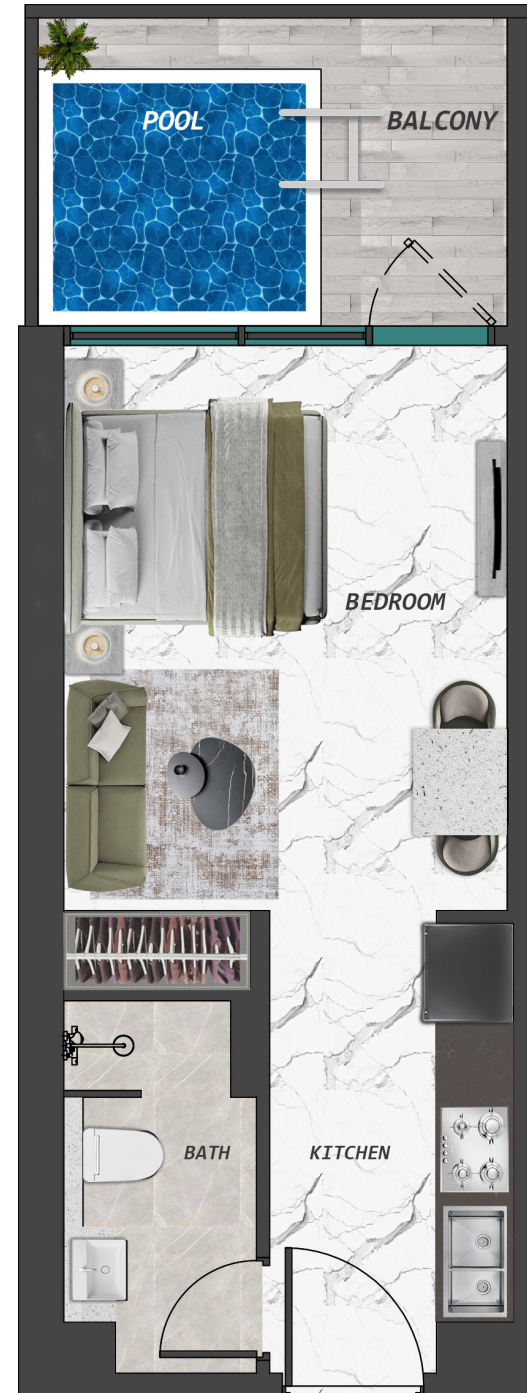


An architectural rendering of a modern, multi-story building with a curved facade and large glass windows. The building is surrounded by lush tropical landscaping, including several tall palm trees and dense foliage. In the foreground, a swimming pool is visible with a person sitting on the edge. The overall scene is presented in a dark, teal-tinted style.

# UNITS LAYOUT



# STUDIO WITH POOL



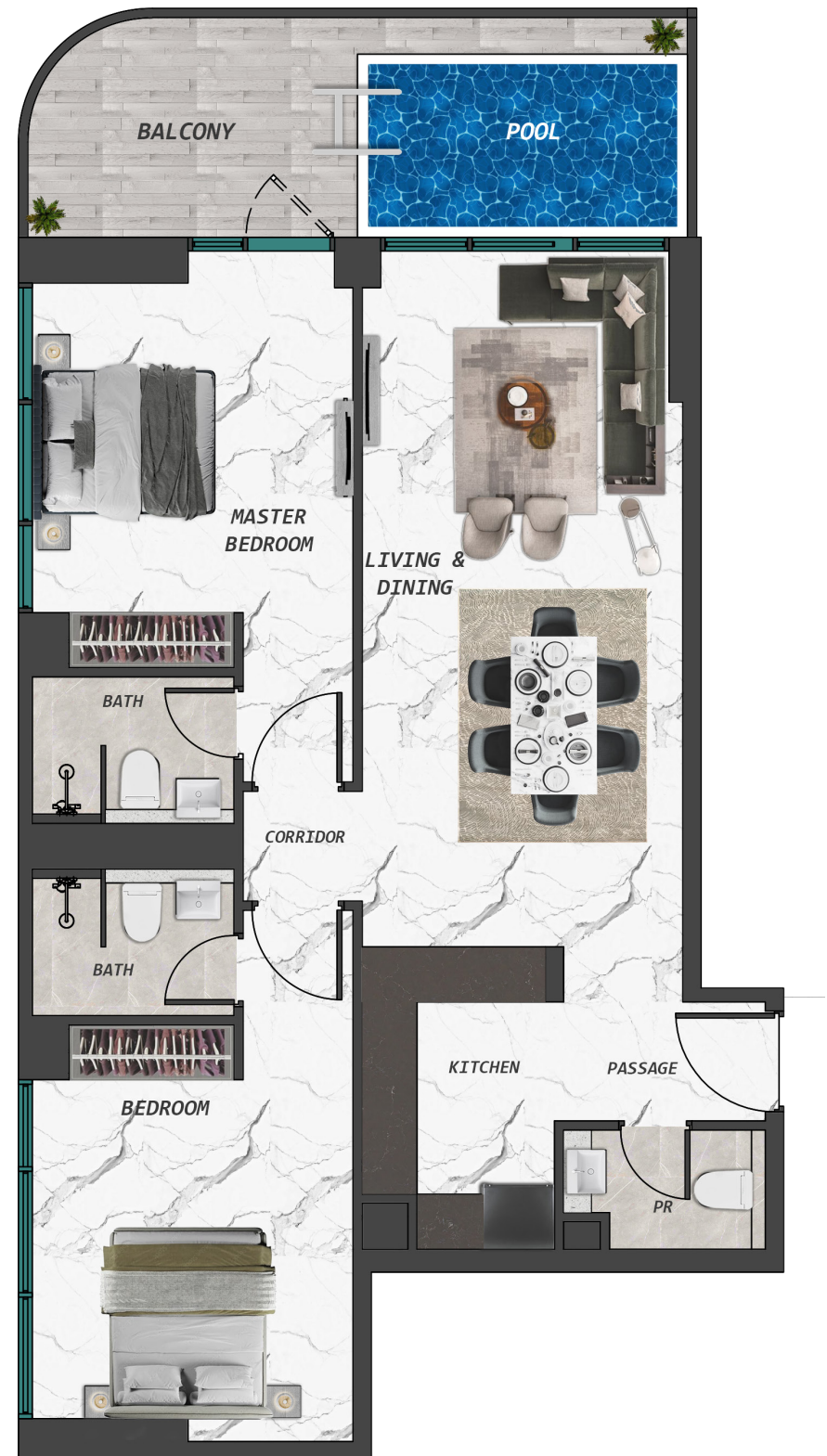


# 1 BEDROOM WITH POOL





# 2 BEDROOM WITH POOL



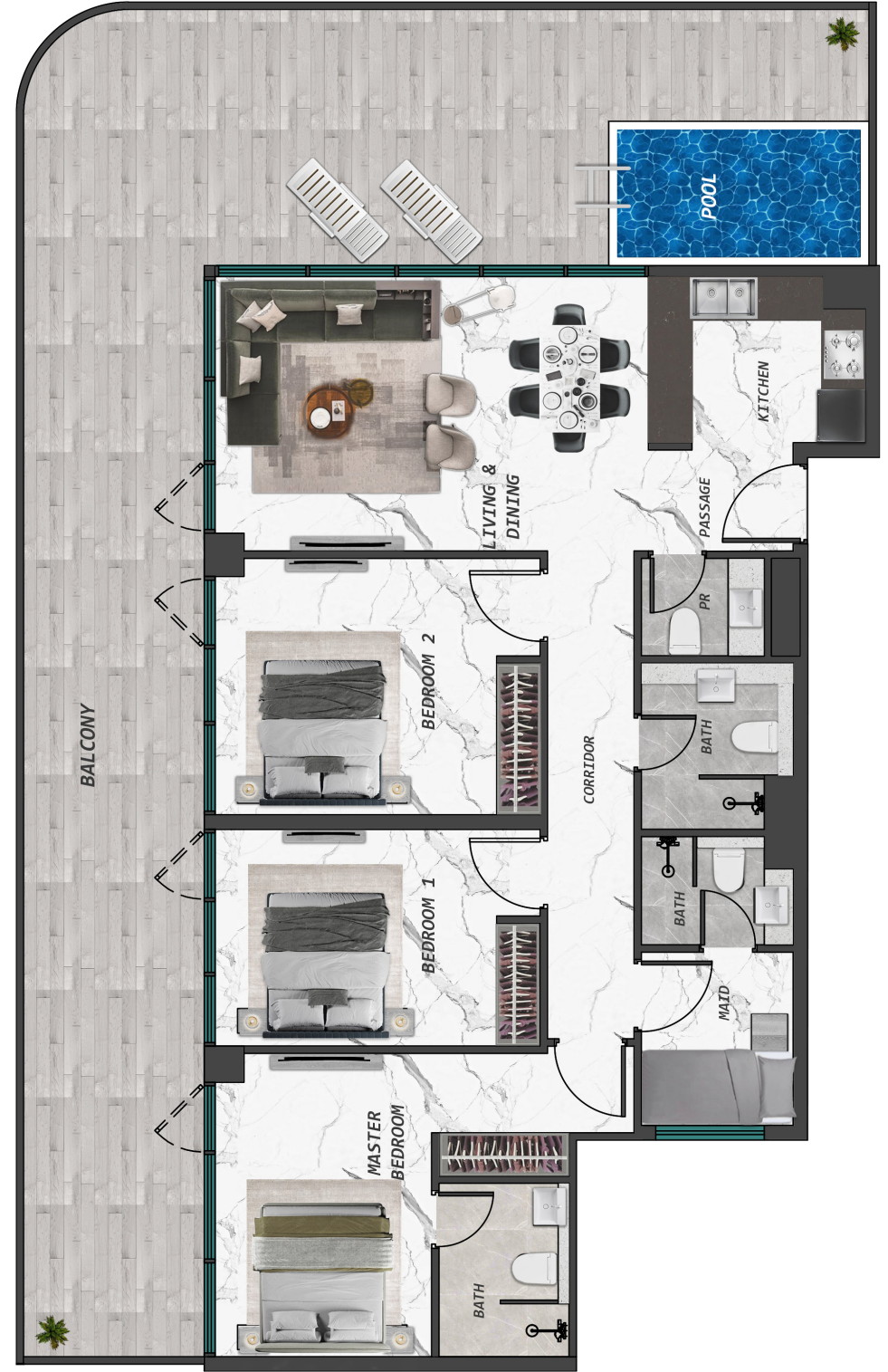


# 2 BEDROOM WITH POOL + MAID ROOM





# 3 BEDROOM WITH POOL + MAID ROOM





A modern interior design featuring a lounge area with a large sofa, a dining table with chairs, and a kitchen island. The space is characterized by clean lines, neutral tones, and large windows. A large abstract artwork is mounted on the wall, and a modern chandelier hangs from the ceiling. The overall atmosphere is sophisticated and minimalist.

# SAMANA

DEVELOPERS